

KMI has been providing quality parts, on time at affordable rates since 1985. We are committed to producing the highest quality machined products and making sure that our customers are 100% satisfied. We are consistently searching for new and more efficient ways to manufacture to keep us competitive in today's market and well into the future. Whether you need a few parts or several thousand we will provide you a detailed and accurate quote in a timely manner. Components are precision machined to print, per customer specifications by our experienced machinists. Secondary operations include heat treating, welding, grinding, plating & assembly. After final inspection all parts are carefully packaged and delivered to the customer on time. We take pride in knowing that our customers continue to use KMI as their #1 source for all of their CNC turning & milling.

EQUIPMENT LIST AND CAPABILITIES

CNC LATHES

MAZAK

Quick Turn 100 2 axis lathe w/ fully programmable tailstock and tool eye for lights out operation. LNS quick load servo barfeeder. 6" chuck and 1 5/8" thru the spindle bar capacity.

3-Quick Turn 100M 3 axis lathe with full C axis and live tooling on all 12 stations. Fully programmable tailstock and tool eye for lights out operation. LNS quick load barfeeder. 6" chuck and 2" thru the spindle bar capacity.

HAAS

ST-20 2 axis, 8" chuck 2" bar capacity, 12 station turret.

Smart 100M 3 axis live tooling, tail stock. LNS barfeeder 1-5/8" bar capacity.

150S 2 axis lathe, tail stock.

200S 2 axis lathe, tail stock w/Fanuc robotic cell

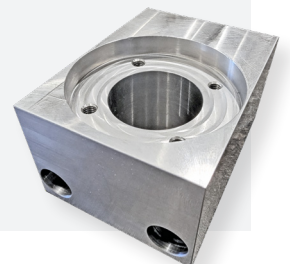
QTN250MY 3.1" bar capacity, 10" chuck 4 axis machine, tailstock, live tooling, Y axis and LNS barfeed.

DMG MORI

2 - Ecoturn 450 10" chuck 2.6" bar capacity. Both with Fanuc robotic cells

QTN250MSY 3.1" bar capacity, 10" chuck, sub-spindle, Y axis, live tooling and LNS barfeed.

QTU250MY 2" bar capacity, 8" chuck, Y axis, live tooling. Fanuc robot with conveyor in and out feed, vision system.



CNC MILLS

DOOSAN

MV3016L 3 axis, 16" x 30" travels dual arm changer, 30 tool capacity, high pressure thru the spindle coolant.

FANUC

Robo drill w/ robotic cell

HAAS

2-VF-2 Super Speed 3 axis, 16" x 30" travels, dual arm changer, 24 tool capacity, 12,000 rpm, TSC.

MDC500 vertical machining center w/ pallet changer, TSC, 24 tools.

DT-2 w/ 20,000 rpm & Fanuc robot

KITAMURA

2-HX300 IG horizontal machining center w/15,000 rpm, TSC, 60 tools



ROBOTICS

FANUC

3-LR Mate 200iD Robot cells.
M10 robot with vision system and conveyor in and out feed

ROBOJOB

Robot cell

ACEITA

Robot cell



SAWING

COSEN

10" automatic feed band saw.

SCOTCHMAN

2- upcut saws for Aluminum



MANUAL MACHINES

Bridgeport Mills

Finishing Tumblers



MATERIAL LIST

OTHER MATERIALS ARE AVAILABLE UPON REQUEST

CARBON STEEL	ALLOY STEEL	STAINLESS	ALUMINUM	PLASTICS	BRASS COPPER BRONZE	TUBING	PIPE
1018	4140	303	6061	UHMW	C110	DOM	
1045	4142	304	6063	PEEK	C360	CREW	
1117	ETD150	316	2011	NYLON	C464	HREW	
1141	4130	416	7075	PVDF		CDBW	
1144	4340	17-4	6005	TEFLON			
A36	8620		7129	ACETAL			
			2024	DELIRIN			
				HDPE			
				PVC			
				POLYPROPYLENE			

Kaseman Machine Inc. would like to thank you for considering our shop for any of your future business.

